

# GLOBAL SCHOLARS

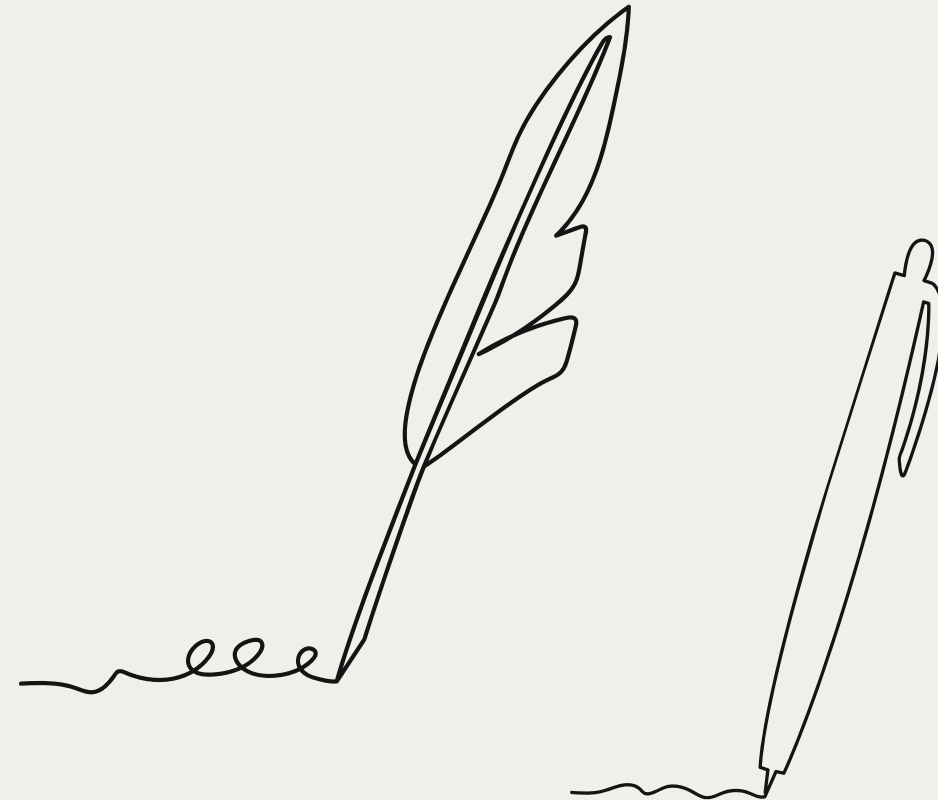
---



PRESENTED BY: STUDENTS BY 2ND ESO

---

# Calldetenes



# Introduction

In calldetenes there is "La Font del Desmai".  
Is a fountain outside the town. The fountain  
was restored in the 1861.

---



People in the past use  
this fountain  
for drinking water.



# Reporter

La font del desmai is a fountain that helps people when they are thirsty, the people refill the canteens when they go with bike, run, walk...

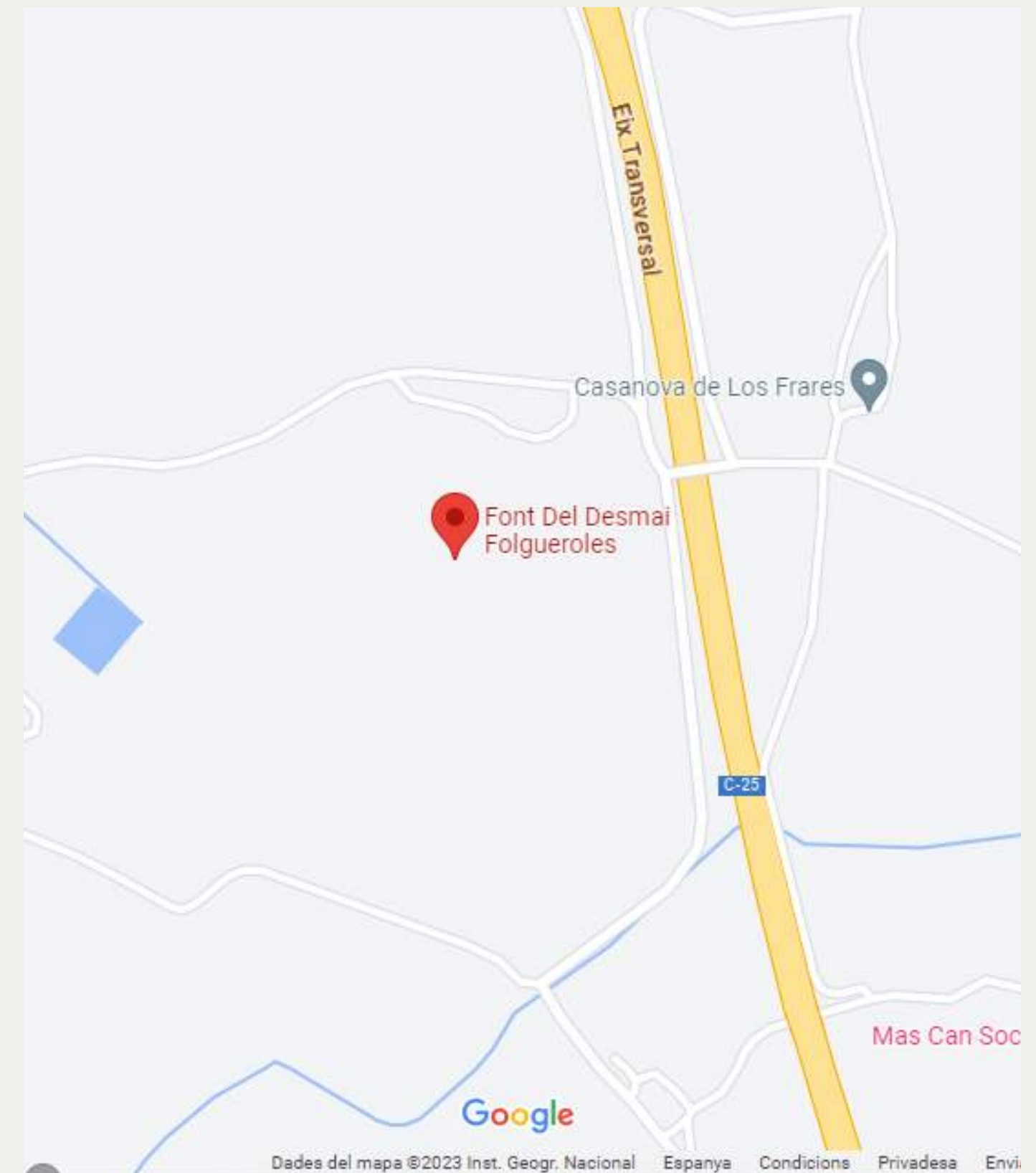
These fountain it's so beautiful too because it's a natural place to visit and it's so well taken care of.

You can arrive by walking, going with bike, running...



It's important because that was where Verdaguier was to read poetry with poets.

We can save this fountain if the people don't build houses and flats there.



---

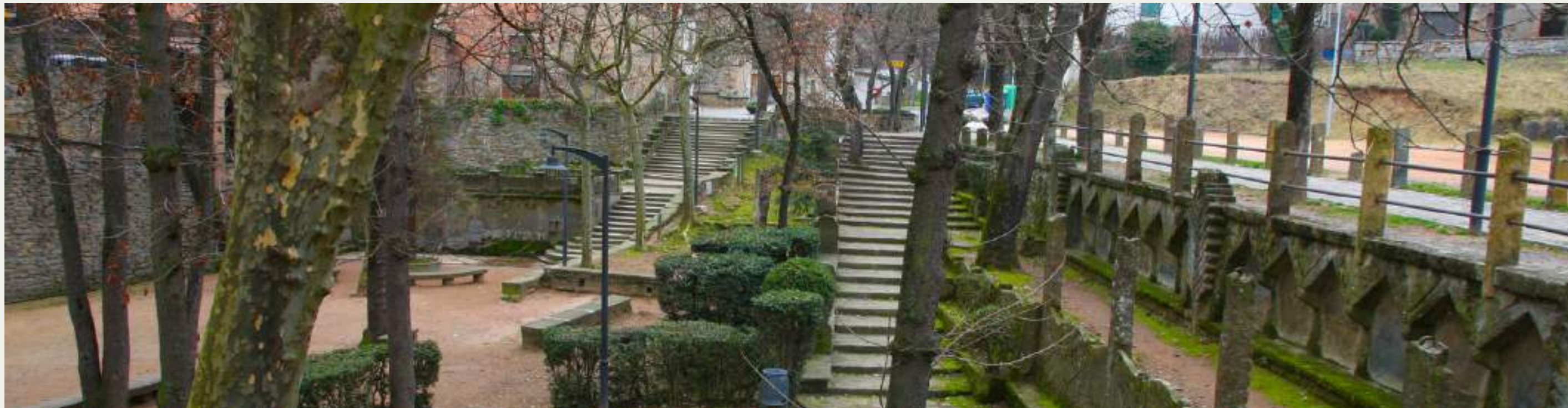
# SANT JULIÀ DE VILATORTA



# INTRODUCTION

Hello, we are the group that will tell you about the water in Sant Julià, below you can see different things about water and how water works in Sant Julià.

---



# WHAT ACTION ADDRESSES THE ISSUE? HOW DOES IT IMPROVE OR PROTECT WATER SECURITY?

---



To protect the water security the water could be filtered and cleaned with an industrial water treatment or we can avoid using slurry as fertilizer for the fields.

---

# WHAT'S THE PROBLEM? HOW DOES WATER SECURITY IMPACT NOW OR FOR THE FUTURE?

---

The quality of the water in Osona public fountains is very worrying. Every year, the results of nitrate concentration pig slurries get worse, and the sources are considerably exceeding the limits set by the I'OMS (World Health Organization, in English).

---





# REFLECTION

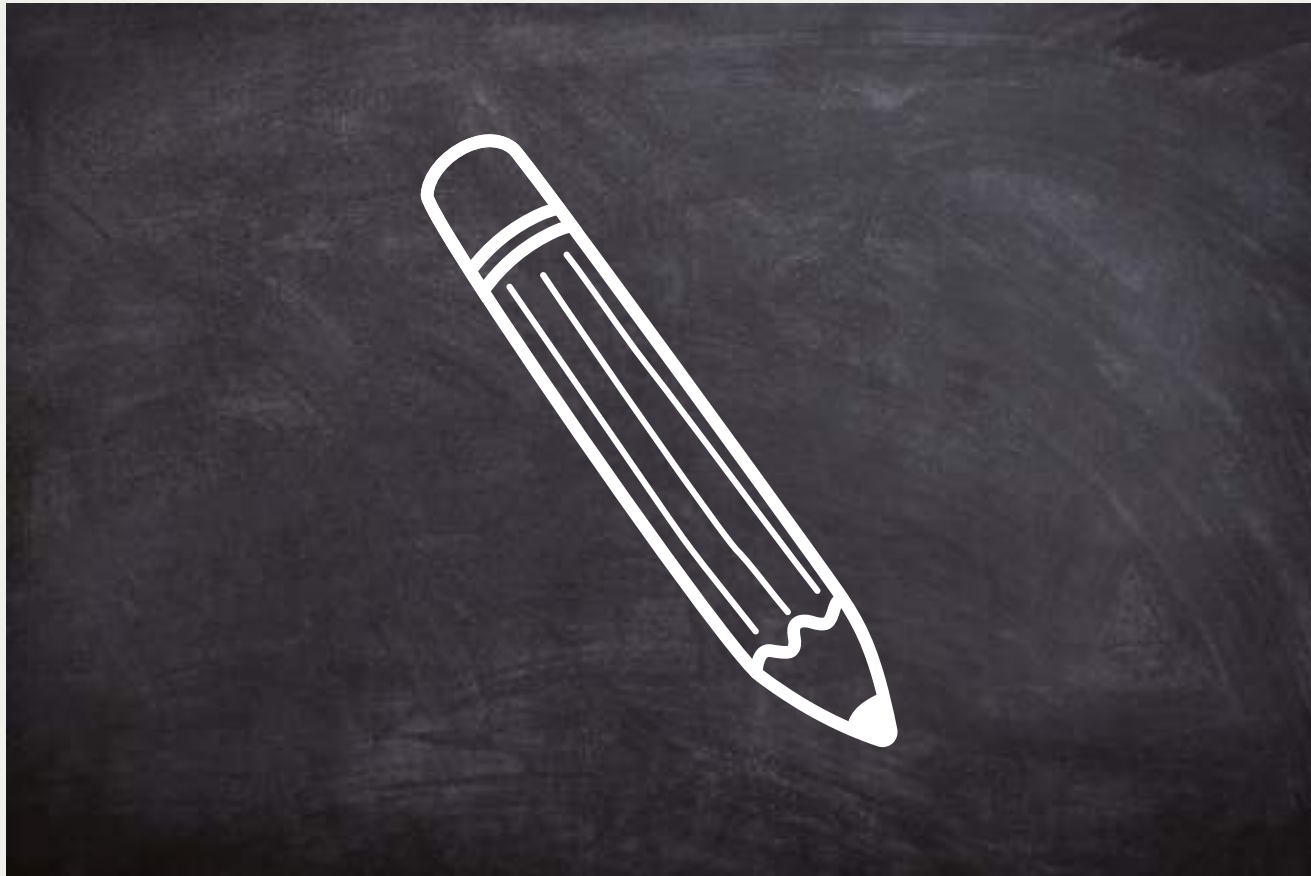
---

For several years, the springs in the Osona region have been very polluted because there are now many pig farms and they throw away the slurry. The slurry is filtered through the earth and reaches the underground water which ends up in the springs.



# CONCLUSION

---



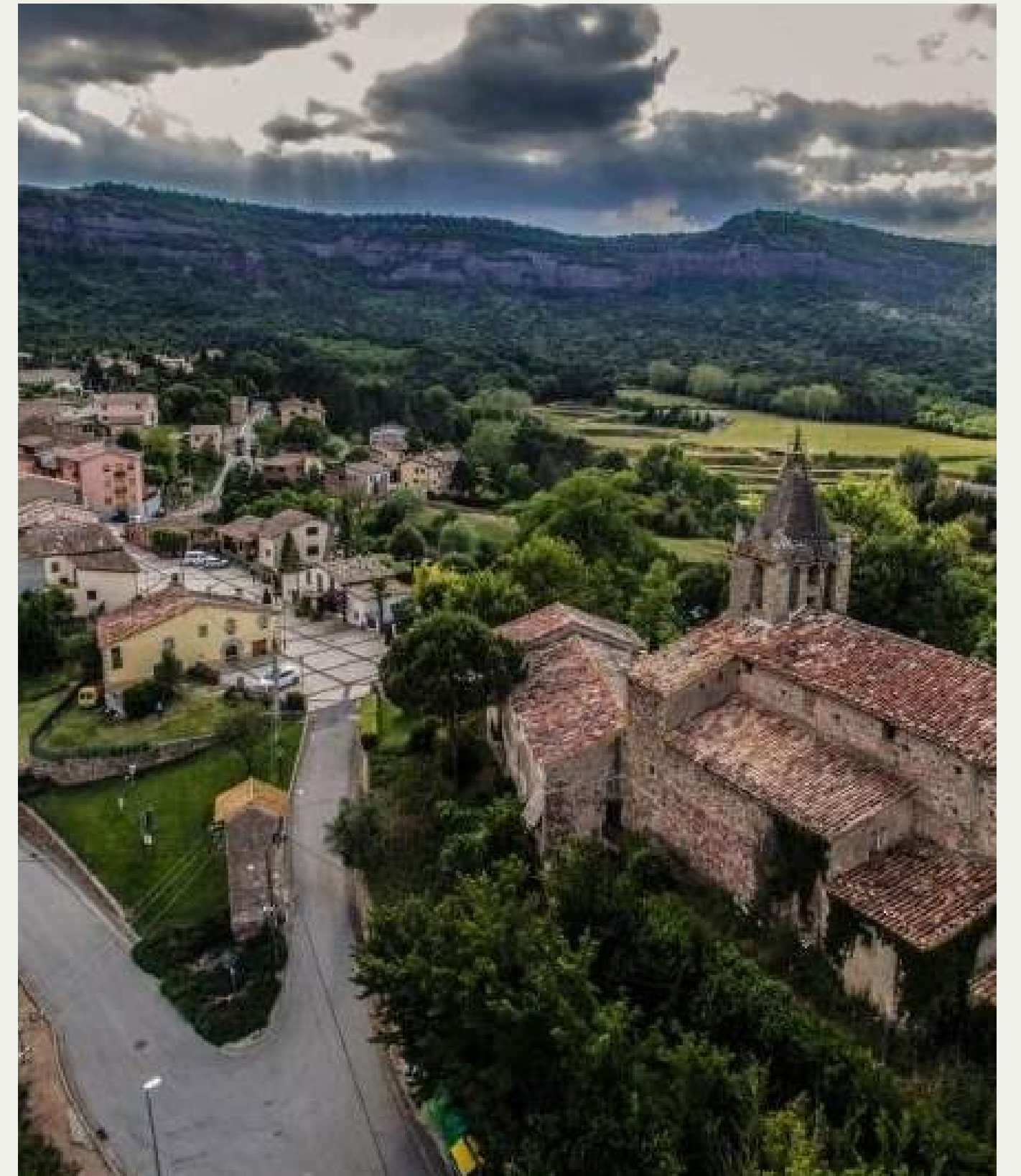
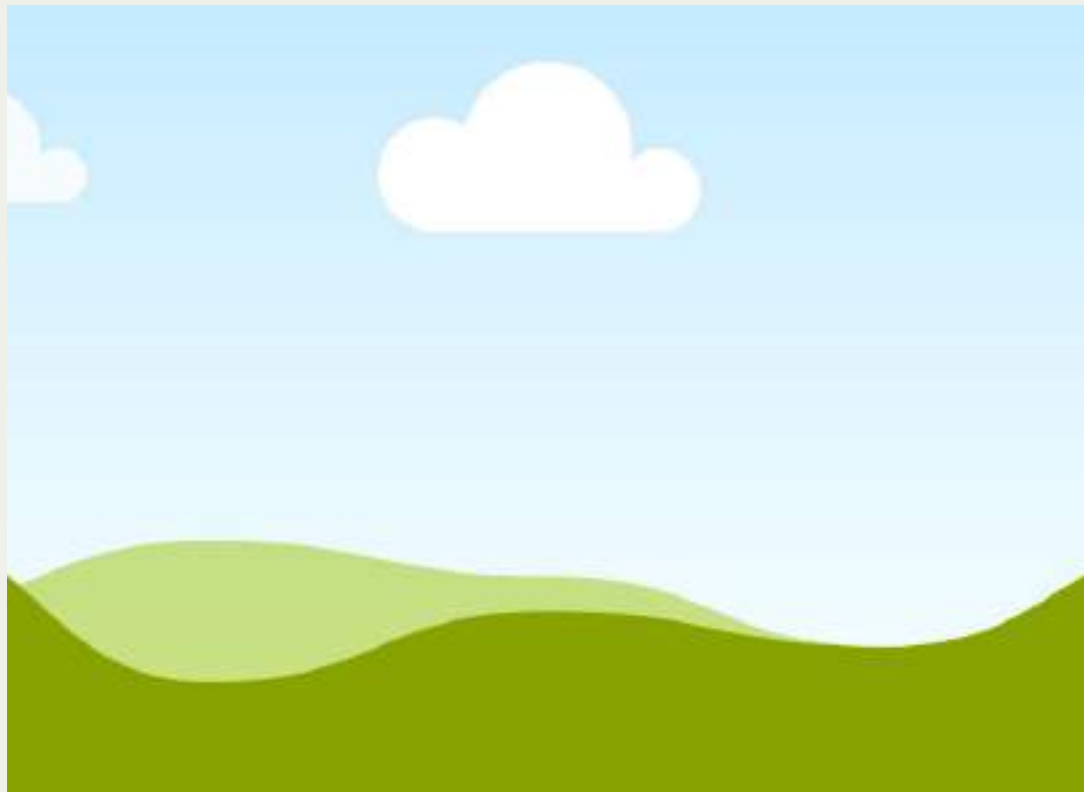
We hope you enjoyed our presentation, and that you learned a lot! In conclusion, we really enjoyed doing this work and we had a great time working as a team.

Clara, Carla, Martina, Claudia, Ivet, Biel, Gil F, Nil, Oriol, Dani, Eloi

---

# PANTA DE SAU

---



The big problem we have is the slurry that contaminates the water, to solve it filters could be put in the water that comes from rivers that are next to farms





IN OUR CITYS AND TOWNS  
EVERYONE HAS WATER, LUCKILY  
THANKS TO THE PANNTAW AND  
ITS WIDE AREA

