

WHAT TIME IS IT?



WHAT TIME IS IT?



It's _____ o'clock

It's nine o'clock (9:00)

WHAT TIME IS IT?

It's half past _____.

It's half past two (2:30)



WHAT TIME IS IT?



It's quarter past _____.

It's quarter to _____ (+1).

It's quarter past eleven (11.15)

It's quarter to five (4.45)

WHAT TIME IS IT?



It's two o'clock (2:00)



WHAT TIME IS IT?



It's five past six
(6:05)

WHAT TIME IS IT?



It's quarter past one
(1:15)

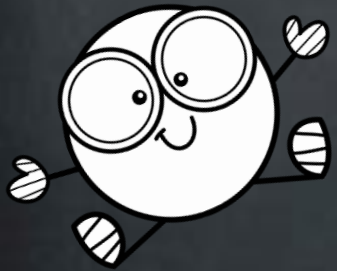


WHAT TIME IS IT?



It's twenty past seven
(7:20)

WHAT TIME IS IT?



It's half past eight
(8:30)



WHAT TIME IS IT?



It's twenty to ten
(9:40)

Remember: minutes to arrive to

WHAT TIME IS IT?



It's quarter to five
(4:45)

Remember: minutes to arrive to



WHAT TIME IS IT?



It's ten to three (2:50)

Remember: minutes to arrive to

