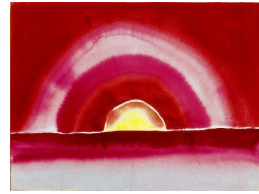


TREBALLEM L'ARTISTA GEORGIA O'KEEFFE



<p>NATURA MORTA</p>	 <p>A still life painting featuring a cluster of small, round fruits, possibly grapes or pears, next to a large, partially peeled orange. The background is dark and moody.</p>
<p>PIPIRIPIPS ORIENTALS (1927) (DIBUIX AL NATURAL D'UNA FLOR)</p>	 <p>A close-up painting of a large, vibrant orange and red flower, likely a poppy, with dark centers. The petals are rendered with soft, blended colors.</p>
<p>EDIFICI RADIADOR NIT NOVA YORK (1927)</p>	 <p>A painting of a tall, dark skyscraper at night, illuminated by lights from the windows. The building is set against a dark sky with some clouds.</p>
<p>OSSOS BLANQUEJATS AL DESERT DE MÈXIC (DIBUIX AL NATURAL D'OSSOS)</p>	 <p>A painting of bleached, white bones scattered across a desert landscape. The bones are set against a clear blue sky and a distant horizon.</p>
<p>SÈRIES PELVIS (1945) (ESCULTURA AMB FANG)</p>	 <p>Two images of pelvic sculptures. The left image shows a solid blue, rounded, bowl-shaped sculpture. The right image shows a woman in a dark dress standing next to a large, yellow, bowl-shaped sculpture in a desert landscape.</p>

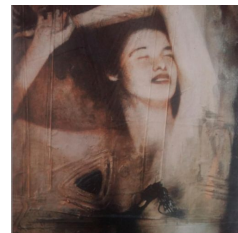
CAPVESPRE (1916)



TREBALLEM L'ARTISTA ROSER ODUBER



FIGURA HUMANA



PINTURES TAROT

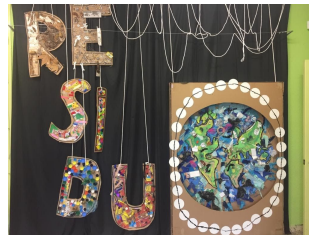


ALTRES ACTIVITATS

PORTA DE LA CLASSE



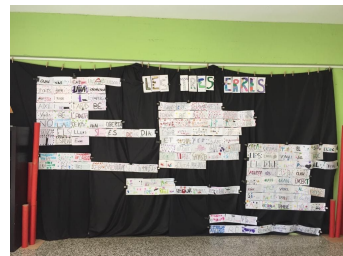
MURAL COL·LECTIU -
MONOGRÀFIC RESIDU
0



MURAL COL·LECTIU
LA TARDOR



MURAL COL·LECTIU -
LES TRES ERRES



MURAL DE NADAL -
ELS NOSTRES DESITJOS



DIBUIX DEL FUMERA

