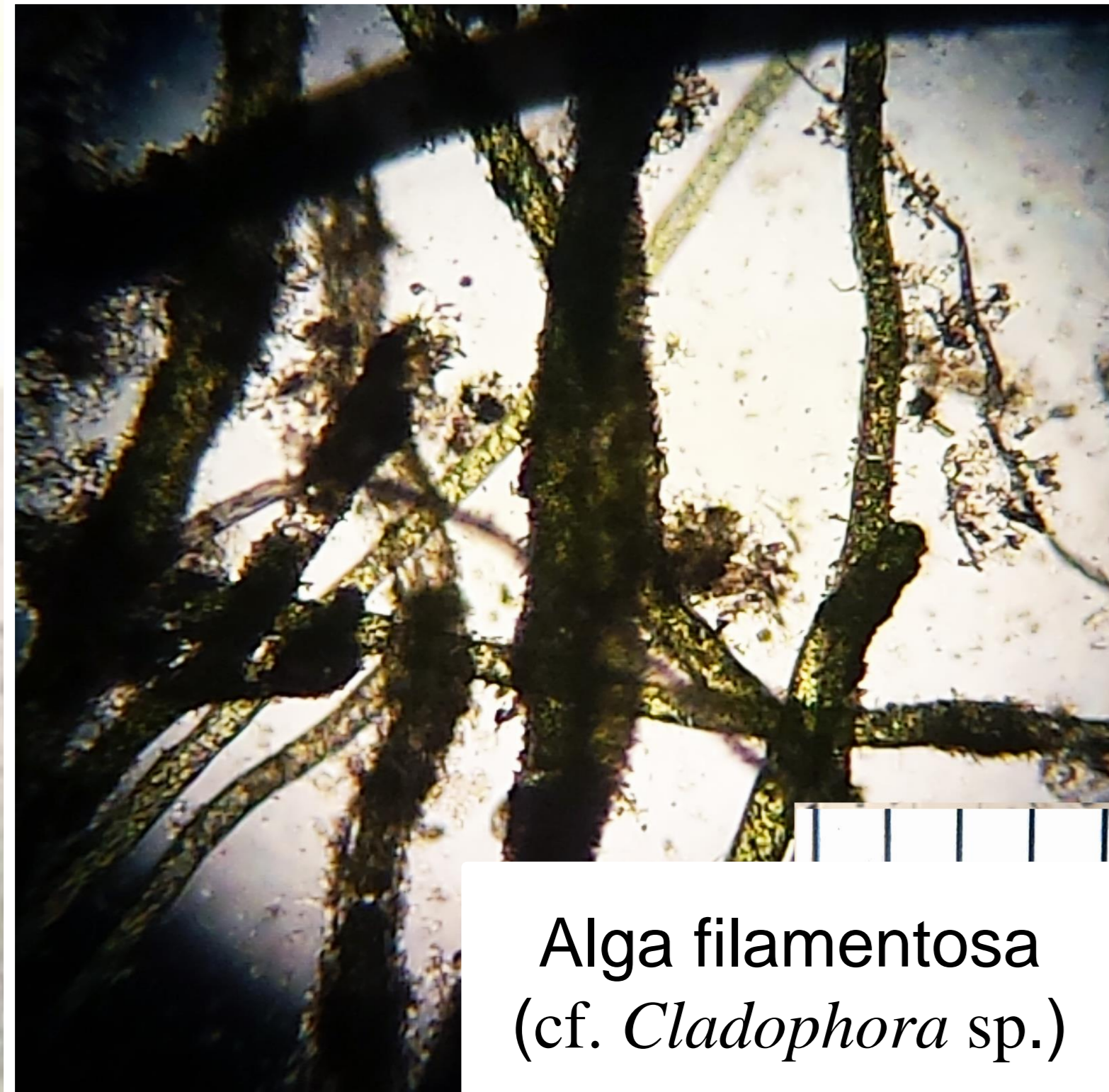


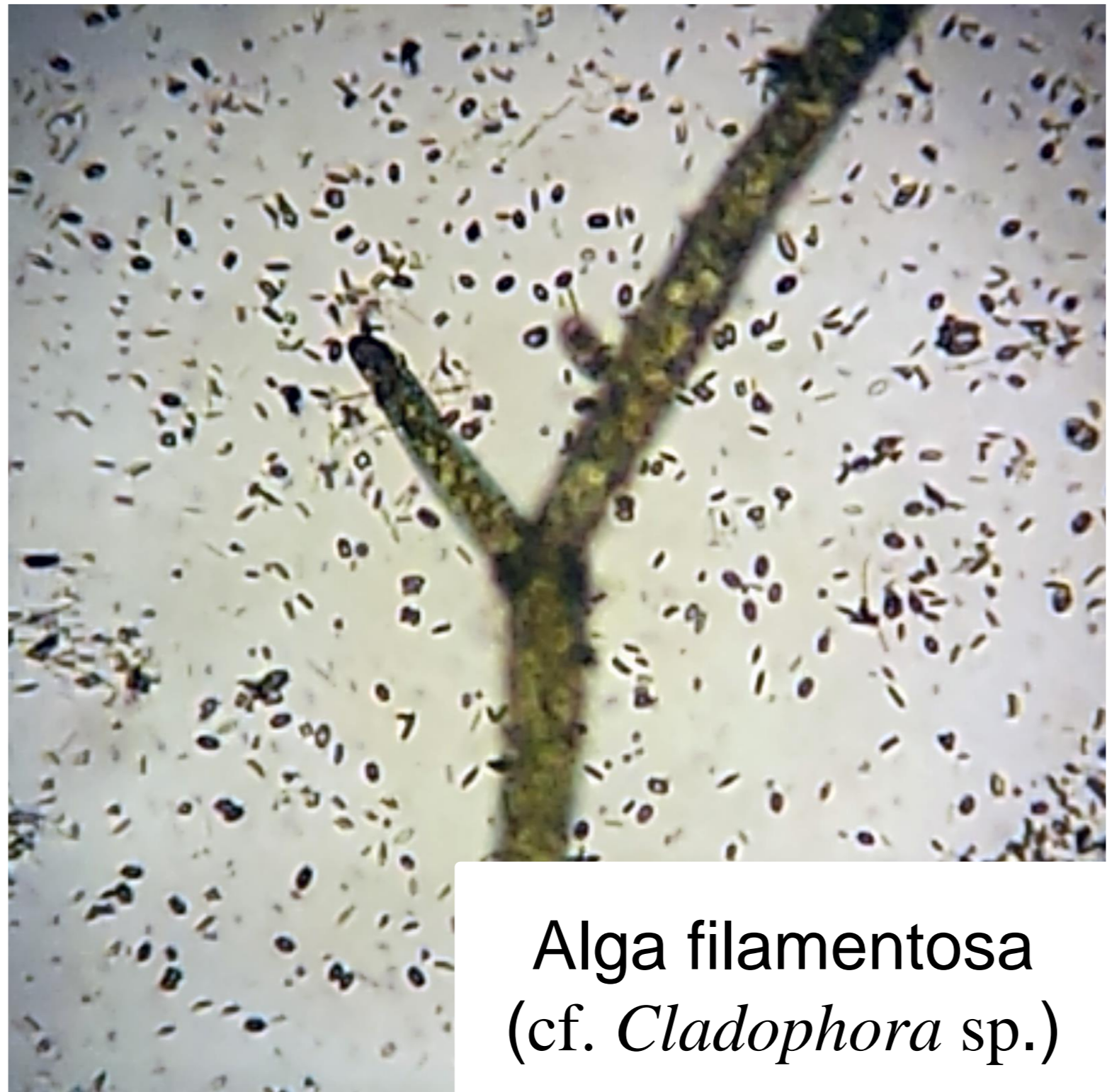
DIVERSITAT D'ORGANISMES TROBATS A LA BASSA DE L'INSTITUT

PROTOCTISTS - ALGUES

INVERTEBRATS



Alga filamentosa (cf. *Cladophora* sp.)



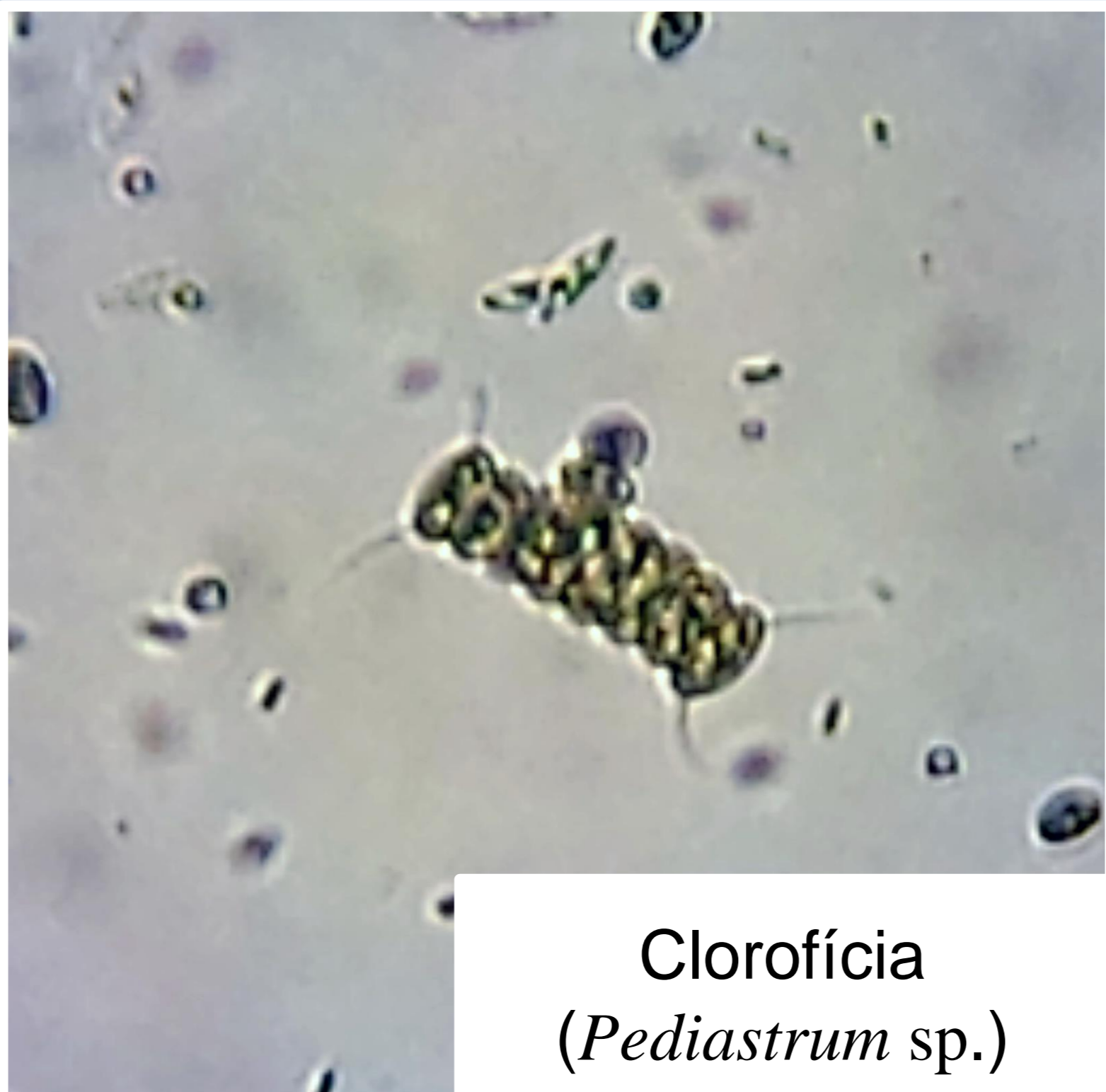
Alga filamentosa (cf. *Cladophora* sp.)



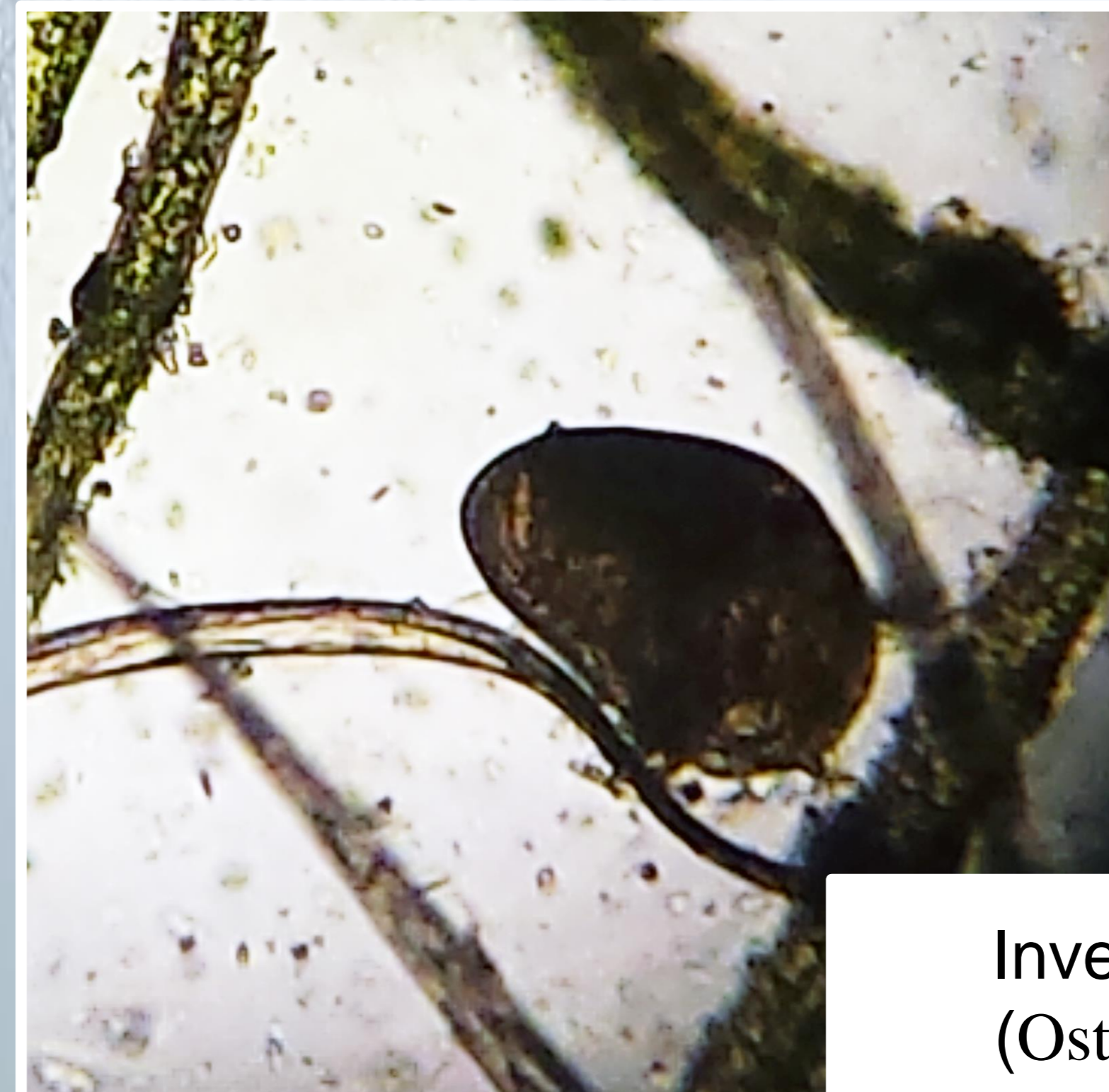
Cuc (*Nematoda*)



Clorofícia (*Scenedesmus* sp.)



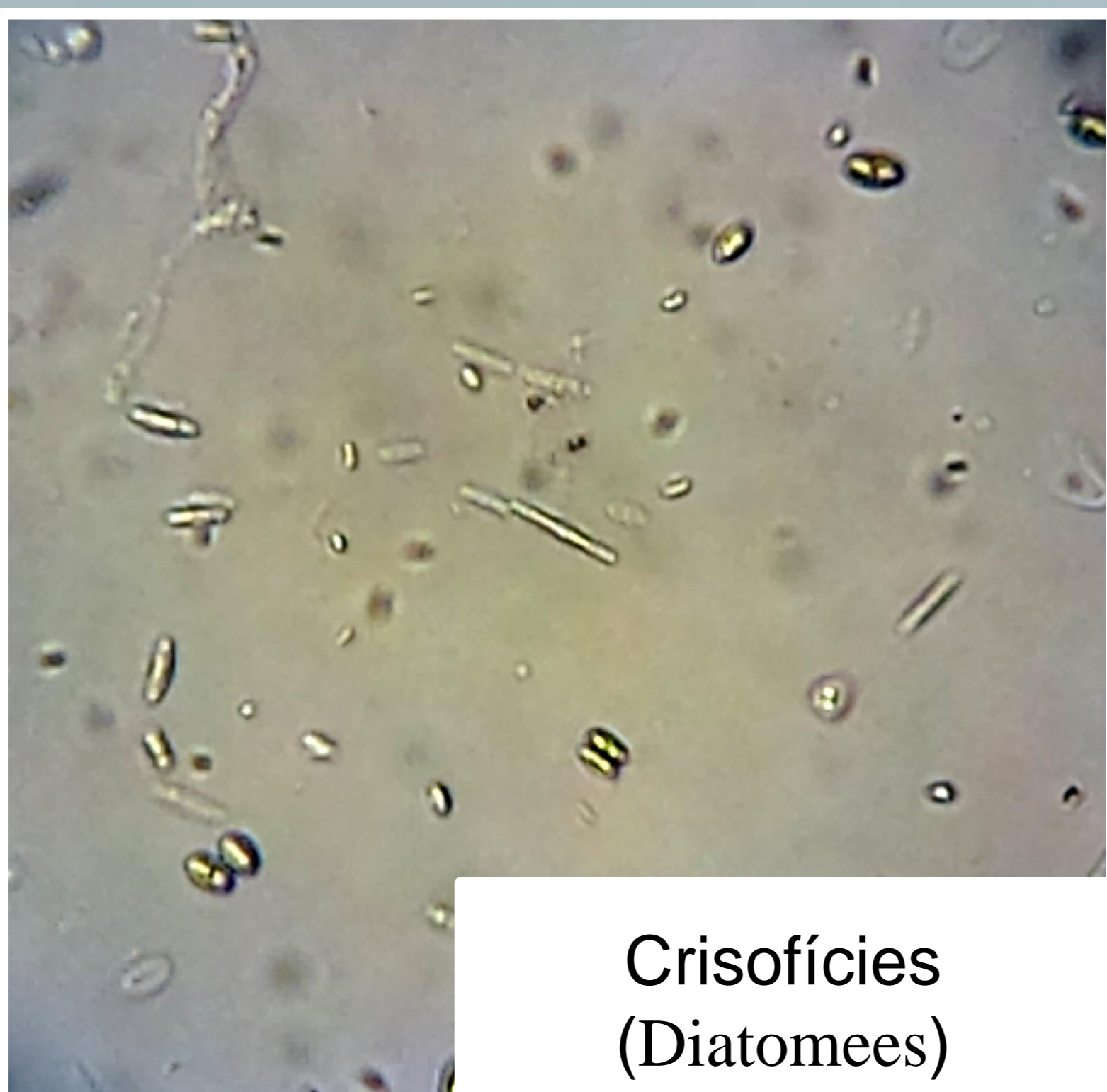
Clorofícia (*Pediastrum* sp.)



Invertebrat (Ostracode)



Clorofícia (*Cosmarium* sp.)



Crisofícies (Diatomees)



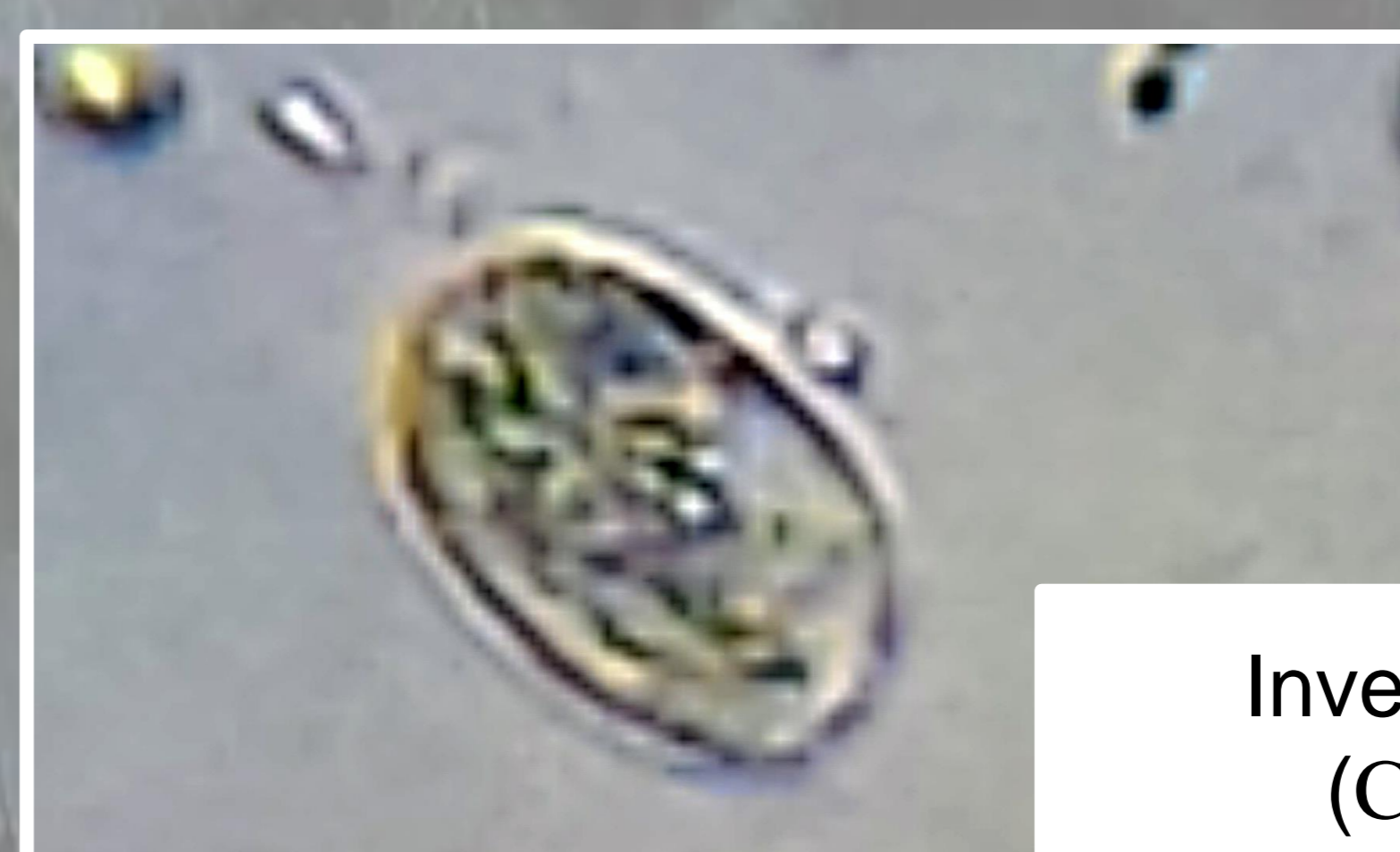
Invertebrat (Rotífer 1)



VERTEBRATS



Invertebrat (Rotífer 2)



Invertebrat (Ciliat)

